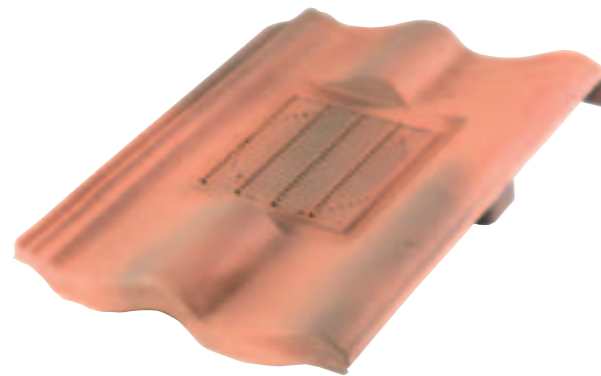


## RUSSVENT P10 - Pennine Tile Ventilator

- 10,000mm<sup>2</sup> Actual Nett. Free Air-Flow
- Minimum Pitch 22.5°
- Can be used at a vertical position
- Available in standard and streak colours
- 2.0 Metre c/c spacing = 5,000 mm<sup>2</sup>
- 1.0 Metre c/c spacing = 10,000 mm<sup>2</sup>
- SUA Pipe Adaptor (Soil Universal Adaptor) and flexible pipe available for soil vent or extract terminals

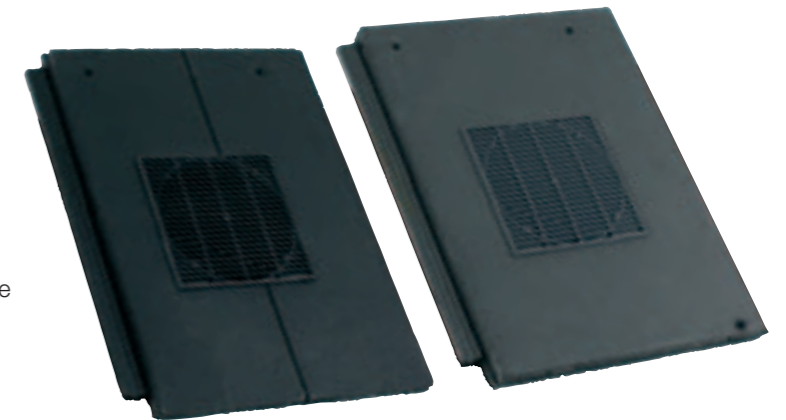
Air-flow resistance when used as SVP/Extract Terminal		
54m <sup>3</sup> /Hr	15 Litres / Sec.	10 Pa
108m <sup>3</sup> /Hr	30 Litres / Sec.	42 Pa
216m <sup>3</sup> /Hr	60 Litres / Sec.	162 Pa



## RUSSVENT C06/C09 - Concrete Galloway/Lothian Tile Ventilator

- 10,000mm<sup>2</sup> Actual Nett. Free Air-Flow
- Minimum Pitch 22.5°
- Can be used at a vertical position
- Available in standard and streak colours
- 2.0 Metre c/c spacing = 5,000 mm<sup>2</sup>
- 1.0 Metre c/c spacing = 10,000 mm<sup>2</sup>
- SUA Pipe Adaptor (Soil Universal Adaptor) and flexible pipe available for soil vent or extract terminals

Air-flow resistance when used as SVP/Extract Terminal		
54m <sup>3</sup> /Hr	15 Litres / Sec.	10 Pa
108m <sup>3</sup> /Hr	30 Litres / Sec.	42 Pa
216m <sup>3</sup> /Hr	60 Litres / Sec.	162 Pa



## RUSSVENT P11 - Plain Tile Ventilator

- 7,500mm<sup>2</sup> Actual Nett. Free Air-Flow
- Minimum Pitch 35°
- Can be used at a vertical position
- Available in standard and streak colours
- 1.5 Metre c/c spacing = 5,000 mm<sup>2</sup>
- 0.75 Metre c/c spacing = 10,000 mm<sup>2</sup>
- SUA Pipe Adaptor (Soil Universal Adaptor) and flexible pipe available for soil vent or extract terminals

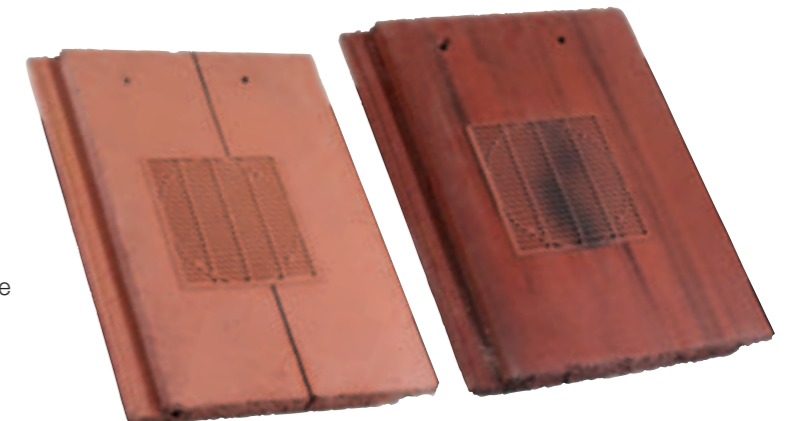
Air-flow resistance when used as SVP/Extract Terminal		
54m <sup>3</sup> /Hr	15 Litres / Sec.	7 Pa
108m <sup>3</sup> /Hr	30 Litres / Sec.	28 Pa
216m <sup>3</sup> /Hr	60 Litres / Sec.	109 Pa



## RUSSVENT C07/C08 - Concrete Grampian/Highland Tile Ventilator

- 10,000mm<sup>2</sup> Actual Nett. Free Air-Flow
- Minimum Pitch 22.5°
- Can be used at a vertical position
- Available in standard and streak colours
- 2.0 Metre c/c spacing = 5,000 mm<sup>2</sup>
- 1.0 Metre c/c spacing = 10,000 mm<sup>2</sup>
- SUA Pipe Adaptor (Soil Universal Adaptor) and flexible pipe available for soil vent or extract terminals

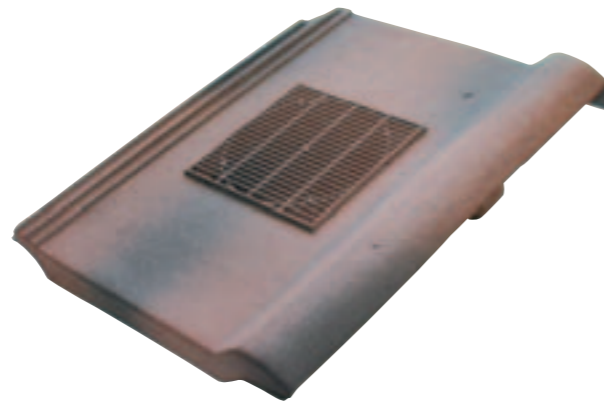
Air-flow resistance when used as SVP/Extract Terminal		
54m <sup>3</sup> /Hr	15 Litres / Sec.	10 Pa
108m <sup>3</sup> /Hr	30 Litres / Sec.	42 Pa
216m <sup>3</sup> /Hr	60 Litres / Sec.	162 Pa



## RUSSVENT P1 - Argyll Tile Ventilator

- 10,000mm<sup>2</sup> Actual Nett. Free Air-Flow
- Minimum Pitch 22.5°
- Can be used at a vertical position
- Available in standard and streak colours
- 2.0 Metre c/c spacing = 5,000 mm<sup>2</sup>
- 1.0 Metre c/c spacing = 10,000 mm<sup>2</sup>
- SUA Pipe Adaptor (Soil Universal Adaptor) and flexible pipe available for soil vent or extract terminals

Air-flow resistance when used as SVP/Extract Terminal		
54m <sup>3</sup> /Hr	15 Litres / Sec.	10 Pa
108m <sup>3</sup> /Hr	30 Litres / Sec.	42 Pa
216m <sup>3</sup> /Hr	60 Litres / Sec.	162 Pa



## RUSSVENT P3 - Cheviot Tile Ventilator

- 10,000mm<sup>2</sup> Actual Nett. Free Air-Flow
- Minimum Pitch 22.5°
- Can be used at a vertical position
- Available in standard and streak colours
- 2.0 Metre c/c spacing = 5,000 mm<sup>2</sup>
- 1.0 Metre c/c spacing = 10,000 mm<sup>2</sup>
- SUA Pipe Adaptor (Soil Universal Adaptor) and flexible pipe available for soil vent or extract terminals

Air-flow resistance when used as SVP/Extract Terminal		
54m <sup>3</sup> /Hr	15 Litres / Sec.	10 Pa
108m <sup>3</sup> /Hr	30 Litres / Sec.	42 Pa
216m <sup>3</sup> /Hr	60 Litres / Sec.	162 Pa



## RUSSVENT P4 - Derwent Tile Ventilator

- 10,000mm<sup>2</sup> Actual Nett. Free Air-Flow
- Minimum Pitch 22.5°
- Can be used at a vertical position
- Available in standard and streak colours
- 2.0 Metre c/c spacing = 5,000 mm<sup>2</sup>
- 1.0 Metre c/c spacing = 10,000 mm<sup>2</sup>
- SUA Pipe Adaptor (Soil Universal Adaptor) and flexible pipe available for soil vent or extract terminals

Air-flow resistance when used as SVP/Extract Terminal		
54m <sup>3</sup> /Hr	15 Litres / Sec.	10 Pa
108m <sup>3</sup> /Hr	30 Litres / Sec.	42 Pa
216m <sup>3</sup> /Hr	60 Litres / Sec.	162 Pa



## RUSSVENT P5 - Double Roman Tile Ventilator

- 10,000mm<sup>2</sup> Actual Nett. Free Air-Flow
- Minimum Pitch 22.5°
- Can be used at a vertical position
- Available in standard and streak colours
- 2.0 Metre c/c spacing = 5,000 mm<sup>2</sup>
- 1.0 Metre c/c spacing = 10,000 mm<sup>2</sup>
- SUA Pipe Adaptor (Soil Universal Adaptor) and flexible pipe available for soil vent or extract terminals

Air-flow resistance when used as SVP/Extract Terminal		
54m <sup>3</sup> /Hr	15 Litres / Sec.	10 Pa
108m <sup>3</sup> /Hr	30 Litres / Sec.	42 Pa
216m <sup>3</sup> /Hr	60 Litres / Sec.	162 Pa

